

1. Authors

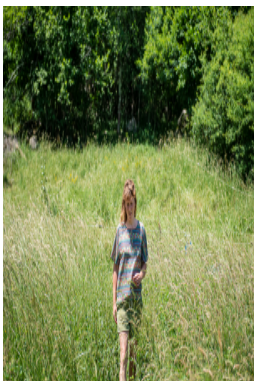


Christophe Imbert

Geographer

Christophe Imbert is professor of geography at the University of Rouen-Normandy, director of UMR 6266 CNRS IDEES. His research examines the effects of mobility on the evolution of settlement patterns and lifestyles. His approach, which is based on collecting life courses, has been deployed in several fields. His thesis focused on the integration of inhabitants of new towns in the Île-de-France region based on data from the “Biographies et Entourage” survey (INED, 2000-2001). He then directed a research project on the metropolitan movements of the inhabitants of Lisbon, uncovering more specifically the family dynamics that were essential to their understanding. After working at INED on the theme of multi-residence in France based on the “Family and housing” survey (INSEE, 2011), he took part in the ANR Camigri project (2016-2011) on the transformations of the French countryside, apprehended through the lens of international migrations.

Projects with the Forum



Following one's path, the desire to slow down in Ariège

Céline Gaille, Christophe Imbert, William Berthomière

Publications with the Forum