

## 1. Authors



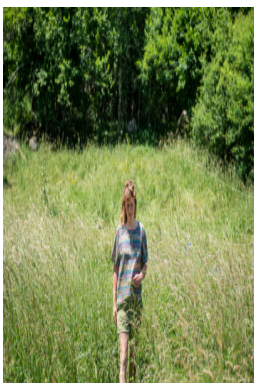
### **William Berthomière**

Geographer

William Berthomière is a geographer and director of research at the CNRS. His scientific work focuses on the field of migration studies and concerns more particularly the introduction of new inhabitants (neo-rural people and asylum seekers) into French rural areas. Based on the notion of “migrant-actor,” his research sheds light on different modes of integration, and how people build communities in rural worlds, within the field of transnational mobilities. From a phenomenological perspective, his work questions the spatial dimensions of presence, by drawing upon micro-geographical approaches in particular.

---

### **Projects with the Forum**



### **Following one's path, the desire to slow down in Ariège**

Céline Gaille, Christophe Imbert, William Berthomière

---

## **Publications with the Forum**