

1. Forum Meetings



Making of identities and movement control in transit places

Les Rencontres du Forum Vies Mobiles

After a 2015 that challenged our mobility systems (terrorist attacks, refugee crisis, COP 21, etc.), the Mobile Lives Forum proposes exploring the question further by looking at one of the key emblems of movement in our society: transit areas. How do they work? What role do they play? How will they be affected by contemporary security, political, social and environmental challenges? Tim Cresswell, mobility theorist and professor at Northeastern University in Boston, and Mikaël Lemarchand, Eurostar station manager, answer these questions.

To celebrate the release of the Forum's new publication, *Ne pas dépasser la ligne !*, the book's two lead authors, Tim Cresswell and Mikaël Lemarchand, joined us to answer some of our questions as well as those of the public, specifically building on the example of two of the largest international mobility hubs in Europe – Schiphol Airport in Amsterdam and the Eurostar space in Gare du Nord. Tim Cresswell also helped us get a clearer picture by presenting us with his theoretical framework on mobility.

The lecture was illustrated with the photographs of Geraldine Lay.

1) Transit places at the heart of our mobility systems – Christophe Gay

2) Theorising mobility and the Shiphol airport example – Tim Cresswell

3) The unique model of the Eurostar station – Gare du Nord – Mikaël Lemarchand

4) The beginning of an important shift in our mobility systems ? – Sylvie Landrière, Tim Cresswell, Mikaël Lemarchand

5) Discussion with the audience

Mobility

For the Mobile Lives Forum, mobility is understood as the process of how individuals travel across distances in order to deploy through time and space the activities that make up their lifestyles. These travel practices are embedded in socio-technical systems, produced by transport and communication industries and techniques, and by normative discourses on these practices, with considerable social, environmental and spatial impacts.

En savoir plus x

Associated Thematics :

Lifestyles

- Representations
- Rhythms of everyday life

Policies

- Aviation
- Paris and Île-de-France
- Public transport

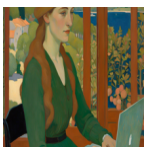
Theories

- Art & Science
-

To cite this publication :

(18 February 2016), « Making of identities and movement control in transit places », Préparer la transition mobilité. Consulté le 22 July 2024, URL: <https://forumviesmobiles.org/en/forum-meetings/3169/making-identities-and-movement-control-transit-places>

Other publications



The impact of the teleworking revolution on the growth of megacities (Paris, London, New York)

BVA Xsight



Have metropolitan mobility policies been redefined by the Covid pandemic?

Jean Debie, Juliette Maulat



The combined use of bicycles and trains in the Netherlands: a promising mode of transport in a suitable environment

Javier Caletrió



The paradoxes of Algeria's car system

Aniss Mouad Mezoued

1 <https://en.forumviesmobiles.org/directory/people/2013/09/13/tim-cresswell-geographe-1165>

2 <https://en.forumviesmobiles.org/directory/people/2016/01/08/mikael-lemarchand-praticien-ne-3099>

3 <https://en.forumviesmobiles.org/directory/people/2016/01/19/geraldine-lay-photographe-3101>